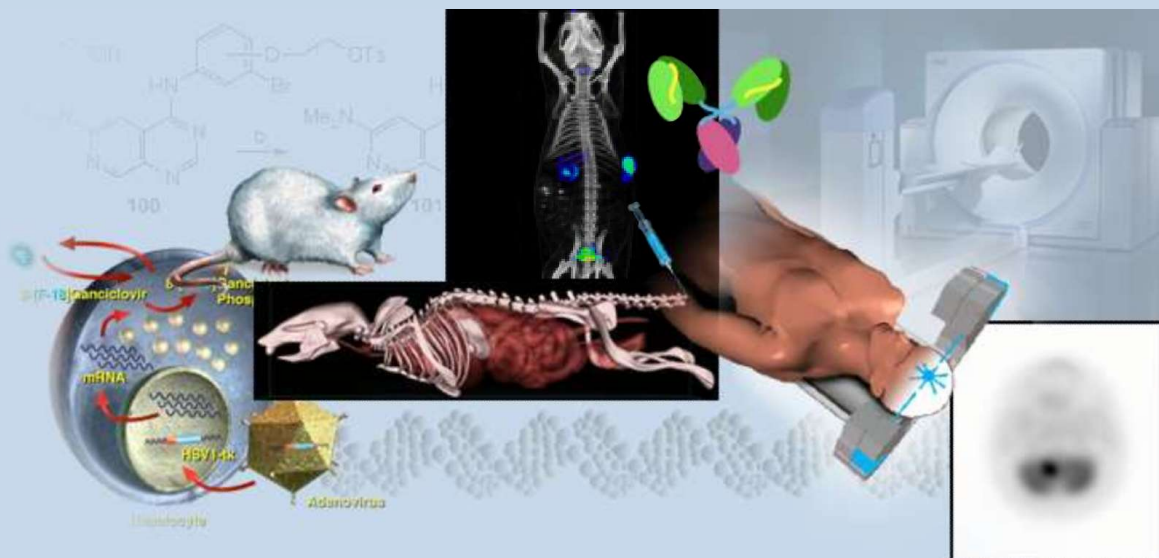




Scholars in Oncologic Molecular Imaging



Postdoctoral Training in Cancer Molecular Imaging

The UCLA Scholars in Oncologic Molecular Imaging (SOMI) Program is a unique postdoctoral training program for biological researchers and physicians who desire to integrate molecular imaging and cancer research. Molecular imaging provides powerful and sensitive tools to observe and measure the molecules, molecular processes, and events that distinguish malignant from normal tissues. Oncologic molecular imaging combines the disciplines of cellular and molecular biology, chemistry, physics, biomathematics and bioinformatics, pharmacology, imaging sciences, and clinical medicine to advance cancer research, diagnosis, and management.

Postdoctoral fellows, with backgrounds from across the basic sciences and medicine, will participate in an integrated, cross-disciplinary training program under the mentorship of a diverse group of basic science and clinical faculty members representing 7 departments and 6 divisions in the David Geffen School of Medicine, the College of Letters and Sciences, and the Henry Samueli School of Engineering and Applied Science. The centerpiece of the program is the opportunity to conduct innovative molecular imaging research co-mentored by two faculty members from complementary disciplines. Fellows also engage in specialized coursework, seminars, and a clinical tutorial program. Graduates of SOMI will be uniquely trained to lead research programs to study cancer in an organismal context with state-of-the-art technologies.

Support is provided for salary, supplies and travel, for up to three years. Applicants must hold a Ph.D. or M.D. degree and must be either a **US citizen or permanent resident**. *We are particularly interested in recruiting trainees who are underrepresented minorities or come from economically disadvantaged backgrounds.*

For further information, application instructions, and deadlines, please visit:

<http://www.crump.ucla.edu/somi/>